



2014-2015

A short guide



國立臺灣大學
National Taiwan University



- 02 President's Statement
- 04 About NTU
- 08 Organizational System
- 12 Milestones
- 14 Campus Exploration Tour
- 16 Main Campus Map
- 18 Multi-discipline Education
- 21 Campus Life
- 24 Research Accomplishments
- 26 International Exchanges
- 30 NTU Museums
- 32 NTU Creativity and Entrepreneurship Program



PRESIDENT'S STATEMENT

The etymology of the word "university" bespeaks of a "unified change," a dogma that I firmly believe NTU has invariably observed.

Owing to the staunch diligence of all our students, faculty, and staff, "National Taiwan University," in QS Intelligence Unit's research director Ben Swart words," has already entered the ranks of the world's leading universities."

With the tide of globalization still sweeping the world, the present era provides ideal opportunities for NTU's faculty and students to showcase their multifarious talents to the international community. One by one, they have been presenting their exceptional academic research achievements on the global stage. The numerous exemplary examples include: NTU's lung cancer stem cell research team published its findings in *Nature Communications*; Prof. Chih-Wei Chang and his research team at the Center for Condensed Matter Sciences presented a paper detailing their discovery of a previously unknown ballistic thermal conduction phenomenon in the prestigious international journal *Nature Nanotechnology*; *Nature* highlighted the discovery of the genes linked to autism made by Prof. Hsien-Sung Huang at the Graduate Institute of Brain and Mind Sciences. Each of these breakthroughs has altered the international scientific or medical landscape. The assiduous effort of our academic colleagues is axiomatically evident in the monumental research they have produced across the entire spectrum of all academic fields.

In addition to an exceptional academic environment, NTU also provides students with the optimal educational platform. We designed the multifaceted Creativity and Entrepreneurship Program in order to develop students' teamwork and problem-solving skills. The university also encourages students to engage in social services, to participate actively in regional communities, and to interact with the local people. I hope every single NTU student is able to give back to society and contribute to the progression and prosperity of the nation.

Only by creating a friendly environment conducive to learning, research, and progress will the university be able to raise fundamentally its competitiveness across the board. This is why the university constantly seeks to renovate and refresh its services and facilities. Whether it's the seventh-generation university affairs information system and service platform or the heterogeneous computing cluster that supports massive data applications, our improvements ensure NTU's hardware and equipment stay on the cutting edge of technology. However, what matters even more is our human-centric attitude in providing academic and administrative services. Such attitude is indispensable in sustaining an amicable and affectionate work environment.

Our culture is deeply steeped in the Confucian ideal of benevolent love, and thus we preserve the invaluable traditions of ethnic-Chinese society. With the melding of the ethos of old and the creativity of new, we enjoy the best of both worlds. Forging NTU into "the portal through which international society appreciates ethnic-Chinese culture and East Asia" continues to be the obstinate aspiration of our indefatigable pursuit.

Pan-Chyr Yang

President, National Taiwan University



ABOUT NTU



HISTORY

National Taiwan University is the most historic institute of higher education in Taiwan. The school was originally named Taihoku (Taipei) Imperial University when it was established in 1928 under the Japanese colonial rule. Following the victory of the R.O.C. government over the Empire of Japan in the Second Sino-Japanese War of 1945, the school was officially reorganized and renamed National Taiwan University with Dr. Tsung-lo Lo serving as its first president.

NTU at present comprises 11 colleges, 54 departments, 105 graduate institutes, and 7 master's and Ph.D. degree programs. The University provides an abundant of diverse academic resources that encouraging students to expand their outlooks and develop the courage to explore. In addition to producing outstanding academic research achievements, the University emphasizes teaching and learning efficacies so as to ensure students are provided the optimal environment for learning and growth and the attainment of a well-rounded education.

UNIVERSITY EMBLEM

NTU's university emblem came into being during former NTU President Chao-Chung Yu's administration, and was officially unveiled at the university's anniversary celebration on November 15, 1982.



UNIVERSITY MOTTO

The motto surrounds the emblem and translates into "Integrity, Diligence, Fidelity, and Compassion." The words represent the fundamental importance of education and serve as a standard for personal refinement.



THE FU BELL

As a landmark of the NTU campus, the Fu Bell incorporates the spirit of a regular and orderly lifestyle, as well as a sense of vigilance for the pursuit of advancement.

THE UNIVERSITY TREE

As a feature of our campus, the royal palm tree is a reminder of the aphorism, "It requires a decade to grow a tree, but a century to grow into a person of refinement."





THE TAIDA SPIRIT

The traditional NTU Spirit comes from the administrative philosophy of former NTU President Szu-Nien Fu. Maintaining lofty ideals and an insistence of the autonomy of the university, Former President Fu endeavored to reorganize the university so as to raise academic standards. Taking office on January 20, 1949, Fu was able to serve only a brief one year and 11 months before passing away due to a stroke in December the following year. Nonetheless, the university concept he espoused as well as the fearless approach to authority he demonstrated have made Fu the spiritual mentor for NTU's administration, inspiring integrity at NTU for more than half a century.

NTU upholds former NTU President Fu's administrative philosophy in its pursuit of university autonomy and academic freedom and holds the expectation that all members of the Taida family adopt the university motto "Integrity, Diligence, Fidelity, and Compassion" as the standard for their conduct, their personal relationships and affairs.

Integrity means honesty and virtue, Diligence means professionalism and excellence, Fidelity means compassion and enthusiasm, Compassion means tolerance and community.

In recent years, the Office of Student Affairs has worked to pass on the traditional NTU Spirit by promoting the acronym TAIDA. Built on the five letters of the English transliteration of NTU's Mandarin Chinese name, TAIDA stands for Team, Accountability, Integrity, Diligence, and Ambition & vision. TAIDA echoes the University motto and stands as the major goals everyone at NTU should strive to achieve.

敦品

Integrity

Moral judgment and practice
Healthy body, healthy mind
Aesthetic taste

勵學

Diligence

Independent thinking and innovativeness
Professional expertise

愛國

Fidelity

Implement civic responsibility
Cultural appreciation
Self expression and teamwork

愛人

Compassion

International vision
Openness and respect for cultural diversity



CULTURAL STRATEGY AND FUTURE GOALS

NTU is Taiwan's most prestigious university and its cultural strategic position in the world is comparable to Taiwan's global cultural strategic position.

Under the determined administration of Liu Ming-chuan during the Qing dynasty, Taiwan had already become a standard for the modernization of China. Over these last several decades Taiwan has been the most important doorway for the entrance of Western culture into the Chinese cultural region. At the same time, it lies within the convergence zone of the four civilizations of East Asia, the West, India, and Islam. However, the dynamism from maritime China requires the sustainability of continental China. Ever since the retrocession, Taiwan has endeavored ceaselessly to transmit the culture of continental China. This has led to an integration of the maritime and the continental and created Taiwan with its own unique cultural qualities amongst ethnic-Chinese cultures and has bestowed Taiwan with a brimming cultural vitality.

From such strategic stance, NTU has achieved its outstanding accomplishments of the last eight decades. And NTU will continue, from the same stance, to use ethnic-Chinese culture as its foundation in modeling a university with local characteristics and a global outlook, a university that stands at the pinnacle of Asia and among the global elite, and a university that serves as a vital force in propelling Taiwan's sustainable development.



ORGANIZATIONAL SYSTEM

ADMINISTRATION

- » Office of Academic Affairs
- » Office of Student Affairs
- » Office of General Affairs
- » Office of Research & Development
- » Office of International Affairs
- » Office of Financial Affairs
- » Libraries
- » Secretariat Office
- » Accounting Department
- » Personnel Department
- » Computer & Information Networking Center
- » The University Press
- » Environmental Protection & Occupational Safety & Health Center



ACADEMIC

College of Liberal Arts

- » Department of Chinese Literature
- » Department of Foreign Languages & Literatures
- » Department of History
- » Department of Philosophy
- » Department of Anthropology
- » Department of Library & Information Science
- » Department of Japanese Language & Literature
- » Department of Drama & Theatre
- » Graduate Institute of Art History
- » Graduate Institute of Linguistics
- » Graduate Institute of Musicology
- » Graduate Institute of Taiwan Literature
- » Graduate Program for Teaching Chinese as a Second Language
- » Graduate Program in Translation and Interpretation
- » Foreign Language Teaching & Resource Center
- » Language Center

College of Science

- » Department of Mathematics
- » Department of Physics
- » Department of Chemistry
- » Department of Geosciences
- » Department of Psychology
- » Department of Geography
- » Department of Atmospheric Sciences
- » Graduate Institute of Oceanography
- » Graduate Institute of Astrophysics
- » Graduate Institute of Applied Physics
- » Institute of Applied Mathematical Sciences
- » Global Change Research Center
- » Instrumentation Center

College of Social Sciences

- » Department of Political Science
- » Department of Economics

- » Department of Sociology
- » Department of Social Work
- » Graduate Institute of National Development
- » Graduate Institute of Journalism
- » Graduate Institute of Public Affairs

College of Medicine

- » Department of Medicine
- » Department of Nursing
- » Department of Clinical Laboratory Sciences & Medical Biotechnology
- » Department of Physical Therapy
- » Department of Occupation Therapy
- » Graduate Institute of Clinical Medicine
- » Graduate Institute of Toxicology
- » Graduate Institute of Biochemistry & Molecular Biology
- » Graduate Institute of Immunology
- » Institute of Biomedical Engineering
- » Graduate Institute of Oncology
- » Graduate Institute of Medical Genomics and Proteomics
- » Graduate Institute of Brain and Mind Sciences
- » Translational Medicine Degree Program
- » Center for Optoelectronic Medicine
- » Laboratory Animal Center
- » Cancer Research Center
- » Drug Research Center
- » University Hospital
- » Cancer Center Hospital
- » School of dentistry
- » Graduate Institute of Oral Biology
- » Graduate Institute of Clinical Dentistry
- » School of Pharmacy
- » Graduate Institute of Clinical Pharmacy

College of Engineering

- » Department of Civil Engineering
- » Department of Mechanical Engineering
- » Department of Chemical Engineering

- » Department of Engineering Science & Ocean Engineering
- » Department of Materials Science & Engineering
- » Graduate Institute of Environmental Engineering
- » Graduate Institute of Applied Mechanics
- » Institute of Building & Planning
- » Institute of Industrial Engineering
- » Institute of Biomedical Engineering
- » Institute of Polymer Science & Engineering
- » Industrial Research Institute
- » Center for Earthquake Engineering Research
- » Hydrotech Research Institute
- » Manufacturing Automation Technology Research Center
- » Ship Technology Research Center
- » Petrochemical Industry Research Center
- » Nano Electro Mechanical System Research Center

College of Bio-Resources & Agriculture

- » Department of Agronomy
- » Department of Bioenvironmental Systems Engineering
- » Department of Agricultural Chemistry
- » Department of Plant Pathology and Microbiology
- » School of Forestry and Resource Conservation
- » Department of Animal Science and Technology
- » Department of Agricultural Economics
- » Department of Horticulture and Landscape Architecture
- » Department of Bio-industry Communication and Development
- » Department of Bio-Industrial Mechatronics Engineering
- » Department of Entomology
- » Institute of Food Science and Technology
- » Institute of Biotechnology

- » Master Program for Plant Medicine
- » Department of Veterinary Medicine
- » Institute of Veterinary Clinical Sciences
- » Graduate Institute of Molecular and Comparative Pathobiology
- » Agricultural Exhibition Hall
- » Agricultural Extension Committee
- » Education and Research Center for Bio-Industrial Automation
- » Hydrotech Research Institute
- » Experimental Forest Administration
- » Veterinary Hospital
- » Agricultural Experimental Farm
- » Upland Experimental Farm

College of Management

- » Department of Business Administration
- » Department of Accounting
- » Department of Finance
- » Department of International Business
- » Department of Information Management

College of Public Health

- » Department of Public Health
- » Graduate Institute of Occupational Medicine & Industrial Hygiene
- » The Graduate Institute of Environmental Health
- » Graduate Institute of Epidemiology and Preventive Medicine
- » Institute of Health Behaviors and Community Sciences
- » Master Of Public Health Program

College of Electrical Engineering & Computer Science

- » Graduate Institute of Electronic Engineering
- » Department of Computer Science & Information Engineering

- » Graduate Institute of Photonics & Optoelectronics
- » Graduate Institute of Communication Engineering
- » Graduate Institute of Electronics Engineering
- » Graduate Institute of Networking & Multimedia
- » Graduate Institute of Biomedical Electronics & Bioinformatics
- » Communication Research Center
- » Nano Electro Mechanical System Research Center

College of Law

- » Department of Law
- » Graduate Institute of Interdisciplinary Legal Studies

College of Life Science

- » Department of Life Science
- » Department of Biochemical Science & Technology
- » Graduate Institute of Plant Biology
- » Institute of Molecular and Cellular Biology
- » Institute of Ecology and Evolutionary Biology
- » Institute of Fisheries Science
- » Institute of Biochemical Sciences
- » Genome and Systems Biology Degree Program
- » Institute of Fishery Biology
- » Committee On Fisheries Extension

- » School of Professional Education & Continuing Studies
- » The Center for General Education
- » The Population & Gender Studies Center
- » Center for Condensed Matter Sciences
- » The Center for Biotechnology
- » The Biodiversity Research Center

TAIDA

TEAM

ACCOUNTABILITY

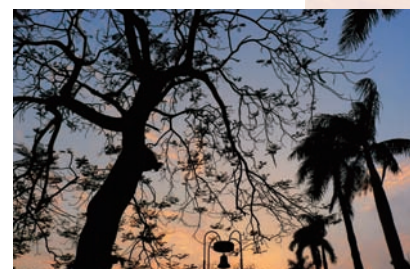
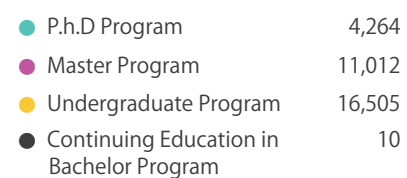
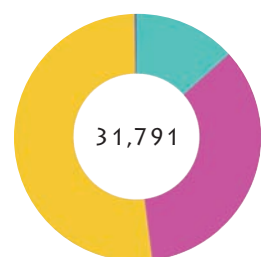
INTEGRITY

DILIGENCE

AMBITION & VISION

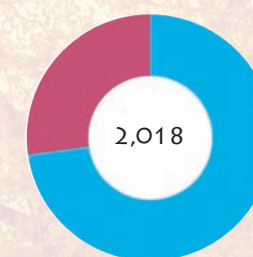
ENROLLMENT

(Date cut-off date:2014 / 10 /15)

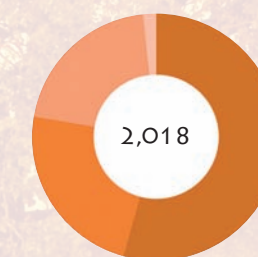


FACULTY & STAFF

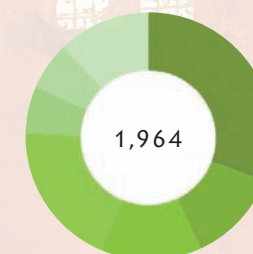
(Date cut-off date:2014 / 8 /31)



Male 1470
Female 548

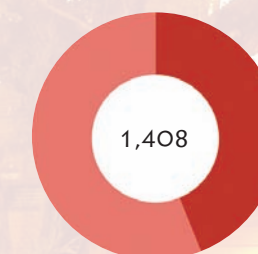


Professors 1096
Associate Professors 471
Assistant Professors 417
Lecturers 34



Adjunct Faculty

Professors 603
Associate Professors 241
Assistant Professors 262
Lecturers 378
Adjunct Rank Specialist 123
Joint Appointment Research Fellow 123
Clinical Teacher 234



Supporting Staff

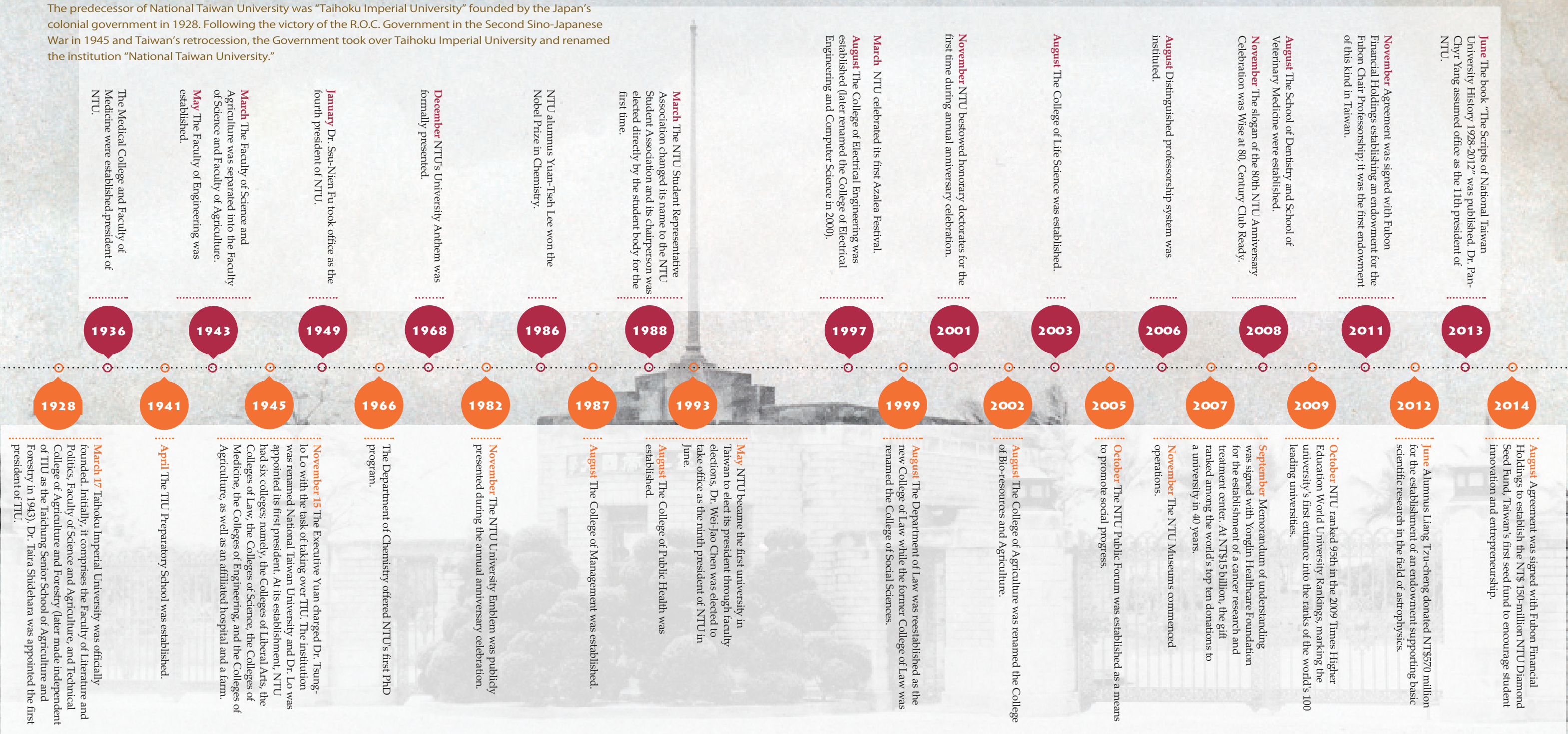
Staff 618
Part-time staff 790

MAJOR ADMINISTRATIVE DIRECTORS

- » **President Professor Pan-Chyr Yang**
Ph.D., National Taiwan University
- » **Vice-President Professor Liang-Gee, Chen**
Ph.D., National Cheng Kung University
- » **Vice-President Professor Ching-Ray Chang**
Ph.D., University of California, San Diego
- » **Vice-President & Dean Office of Financial Affairs Professor Li, Shu-Hsing**
Ph.D., New York University, Accounting
- » **Dean of Office of Academic Affairs Professor Rong-Huay Juang**
Ph.D., National Taiwan University
- » **Dean of Office of Student Affairs Professor Tsung-Fu Chen**
Ph.D., New York University
- » **Dean of Office of General Affairs Professor Gen-Shuh Wang**
Ph.D., State University of New York
- » **Dean of Office of Research and Development Professor Fang-Jen, Lee**
Ph.D. North Carolina State University
- » **Dean of Office of International Affairs Professor Luisa Shu-Ying Chang**
Ph.D., Complutense University of Madrid
- » **Secretary-General Professor Lin, Ta-Te**
Ph.D., Cornell University

MILESTONES

The predecessor of National Taiwan University was “Taihoku Imperial University” founded by the Japan’s colonial government in 1928. Following the victory of the R.O.C. Government in the Second Sino-Japanese War in 1945 and Taiwan’s retrocession, the Government took over Taihoku Imperial University and renamed the institution “National Taiwan University.”



CAMPUS EXPLORATION TOUR

NTU LIBRARY

NTU Library was originally established in March 1928 while the new Main NTU Library Building opened in November 1998. Housing in excess of 7 million publications, and enjoying an additional archive of more than 2.7 million electronic books, 50,000 electronic periodicals, and 560 electronic databases, our library houses the largest collection of materials of any university library in the nation. The library's collection also includes more than 200,000 rare and ancient Chinese and foreign language texts and the library continues the task of digitally archiving this valuable material.

THE FIRST STUDENT ACTIVITY CENTER

Characterized by its strong modern-Chinese architectural style, the 1st Student Activity Center is the work of renowned architect Wang Da-Hong. With an auditorium, a living and vending area, student lounge, arts and culture exhibition spaces, and student club offices, the center is the main venue for student activities on campus. At present, more than 1,000 student clubs are registered at NTU, seeding the campus with diversity and vitality.



LUNA POND

Drunken Moon Lake used to be called Niou Nan Pond back in the old days when it was used to regulate water levels of the Liugongjun canal system. For a time, the Fisheries Division of the Department of Zoology even used the lake to raise fish for experiments. Drunken Moon Lake has been cherished by generations of students for its ambience of bucolic mystique, and it remains a popular place for strolls and relaxation outside of class.

ZHOUSHAN ROAD

Zhoushan Road has become a major scenic route on the NTU Main Campus and it remains an important conduit for navigating the campus. Walking down Zhoushan Road entrance by Gongguan MRT Station, pedestrians can enjoy an automobile-free stroll amidst the sea of golden flowers lining the road. The butter-yellow petals covering the ground are the "golden rain" of the aptly named Taiwan Golden Rain Tree.



FU GARDEN

The spot occupied by Fu Garden was originally a tropical plant specimen garden during the Japanese colonial era and was used by the Japanese to collect and study tropical flora found in Taiwan and the south seas. Following the passing of beloved former NTU President Szu-Nien Fu on December 20, 1950, it was decided that his body would be interned on the NTU campus. In December 1951, The Szu-Nien Mausoleum was completed and the site was renamed as the Fu Garden.

- 健康科學與生活研究中心 ———— C21 A1
Health Science and Wellness Center
- 基因醫學研究中心 ———— C21A A1
NTU Center of Genomic Medicine
- 生醫暨科技倫理、法律與社會中心 ———— C211 A1
Center for Ethics, Law and Society in Biomedicine and Technology
- 發育生物學與再生醫學研究中心 ———— C22 A1
Research Center for Development Biology and Regenerative Medicine
- 智慧型機器人及自動化研究中心 ———— E71 E2
Center for intelligent robotics and automation research
- 智慧健康科技研發中心 ———— C220 A1
Smart-Health Technology Research & Development Center
- 公共政策與法律研究中心 ———— C233 B1
Center for Public Policy and Law (CPPL)
- 其他單位 Other Units
- 中研院原子與分子科學研究所 ———— N21 C2
Institute of Atomic and Molecular Sciences
- 中華經濟研究院 ———— SE45 E3
Chung Hua Institution for Economic Research
- 國家地震工程研究中心 ———— SE52 E2
National Center for Research on Earthquake Engineering
- 身心障礙者輔具工程研究中心 ———— W16 A3
Rehabilitation Engineering Research Center
- 大學入學考試中心 ———— S41 C3
College Entrance Examination Center
- 臺大附設幼稚園 ———— S25 C3
NTU Kindergarten
- 綠房子 ———— SE2 D3
Eco-House
- 臺灣歐洲聯盟中心 ———— C233 B1
European Union Centre in Taiwan
- 財團法人語言訓練測驗中心 ———— N74 D2
The Language Training & Testing Center (LUTC)
- 體育設施 Athletic Facilities
- 綜合體育館 ———— N5 C1
Sports Center
- 體育館 ———— N14 C2
Gymnasium
- 游泳池 ———— N15 C2
Swimming Pool
- 城中校區體育館 ———— C216 A1
Gym (Downtown Campus)
- 學生活動中心 Student Activity Center
- 第一學生活動中心 ———— M11 D2
1st Student Activity Center
- 第二學生活動中心 ———— S10 C3
2nd Student Activity Center
- 社科院學生活動中心 ———— C232 B1
Student Activity Center, College of Social Sciences
- 教學大樓 Instructional Buildings
- 普通教學館 ———— N11 C2
Core Subjects Classroom Building
- 博雅教學館 ———— N13 C2
Liberal Education Classroom Building
- 新生教學館 ———— N25 C2
Freshman Classroom Building
- 綜合教學館 ———— M10 D2
Multi-Purpose Classroom Building
- 共同教學館 ———— M57 C3
Common Subjects Classroom Building
- 語文大樓 ———— N74 D2
Language Building
- 城中校區前排教室 ———— C235 B1
Classroom Building (I) (Downtown Campus)
- 城中校區後排教室 ———— C236 B1
Classroom Building (II) (Downtown Campus)
- 圖書館 Libraries
- 總圖書館 ———— M12 D2
Main Library
- 醫分館 ———— C212 A1
Medical Library
- 法社分館 ———— C234 B1
Law and Social Sciences Library
- 法律學院圖書室 ———— E53 E2
College Library of Law
- 博物館 Museums
- 校史館 ———— M3 C2
Gallery of NTU History
- 農業陳列館 ———— M2 C2
Agricultural Exhibition Hall
- 植物標本館 ———— M22 C2
Herbarium (TH)
- 動物博物館 ———— S41 C3
Museum of Zoology
- 人類學博物館 ———— M3 C2
Museum of Anthropology
- 地質標本館 ———— S22 C3
Geo-specimen Cottage
- 物理文物廳 ———— M41 C2
Heritage Hall of Physics
- 昆蟲標本室 ———— S71 D4
Insectarium
- 檔案展示室 ———— W21 A3
Museum of Archives
- 醫學人文博物館 ———— C211 A1
Museum of Medical Humanities

藝文設施 Arts Facilities

- 雅韻坊 ———— S6 C3
NTU Center for Arts-The Odeum
- 外語教學暨資源中心附設劇場 ———— N73 C2
Foreign Language Teaching & Resource Center
- 鹿鳴堂 ———— S23 C3
Lu-Ming Hall
- 文學院演講廳 ———— M6 C2
Lecture Hall, College of Liberal Arts

生活與餐飲設施 Life and Dining Rooms

- 新月台 ———— N1 B2
New Moon Pavilion
- 小福樓 ———— N12 C2
Xiao-Fu Square
- 小小福 ———— M52 C3
Xiao-Xiao-Fu Food Services
- 農產品展售中心 ———— M58 C3
Agricultural Products Sales Center
- 鹿鳴堂 ———— S23 C3
Lu-Ming Hall
- 尊賢館 ———— S13 C3
Tsun-Hsien Hall
- 明達館 ———— E71 E2
Ming Da Hall
- 第二學生活動中心 ———— S10 C3
2nd Student Activity Center
- 太子學舍-修齊會館 ———— W1 B3
Prince House - NTU Hsü-Chi House

書店 Bookstores

- 出版中心書店 ———— M12 W15 D2/A3
NTU Press Book Store

校園安全與醫療設施 Security & Hospital Health Center

- 駐衛警察隊 ———— S21 C3
Campus Security
- 保健中心 ———— M65 D2
Health Center
- 臺大醫學院附設醫院 ———— C21/C22/C220 A1
NTU Hospital
- 動物醫院 ———— SE11 D3
NTU Veterinary Hospital

學生宿舍大樓 Dormitories

- 女一舍 (附設餐廳) ———— M23 C3
1st Women's Dorm
- 女二舍 ———— M25 C3
2nd Women's Dorm
- 女三舍 ———— M24 C3
3rd Women's Dorm
- 女四舍 ———— C224 B1
4th Women's Dorm
- 女五舍 ———— M26 C3
5th Women's Dorm
- 女六舍 (附設餐廳) ———— C217 A1
6th Women's Dorm
- 女八舍 ———— N56 D2
8th Women's Dorm
- 女九舍 (附設餐廳) ———— N55 D2
9th Women's Dorm
- 大一女舍 ———— M27 C3
Freshman Women's Dorm
- 男一舍 ———— SE21 E2
1st Men's Dorm
- 男二舍 (附設餐廳) ———— C217 A1
2nd Men's Dorm
- 男三舍 ———— SE22 E3
3rd Men's Dorm
- 男四舍 ———— C225 B1
4th Men's Dorm
- 男五舍 ———— SE23 E3
5th Men's Dorm
- 男六舍 ———— SE42 E2
6th Men's Dorm
- 男七舍 (附設餐廳) ———— SE31 E3
7th Men's Dorm
- 男八舍 ———— SE41 E2
8th Men's Dorm
- 研一舍 (附設餐廳) ———— M28 C3
1st Graduate Dorm
- 國青大樓/研三舍 (附設餐廳) ———— E52 E2
Guo-Ching Building / 3rd Graduate Dorm
- 太子學舍-長興舍區 ———— SE43 E2
Prince House - NTU Chang-Hsiang Dorms
- 太子學舍-水源舍區 ———— W2 B3
Prince House - NTU Shui-Yuan Dorms

訪客住宿 Hotel Accommodations

- 尊賢館 ———— S13 C3
Tsun-Hsien Hall
- 太子學舍-修齊會館 ———— W1 B3
Prince House - NTU Hsü-Chi Dorms

使用說明
Guideline

所屬建物編號
Located building number

所在地圖區域
Map area

更多資訊 For More Information

臺灣大學 國家台灣大學
電話總機 TEL: +886 (0)2 3366 3366
www.ntu.edu.tw

NTU Visitor Center
電話TEL: +886 (0)2 3366 3810
http://visi tor.secretary.ntu.edu.tw/

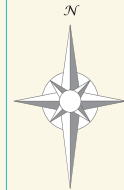
電子地圖 NTU Campus Map
http://map.ntu.edu.tw/

國立臺灣大學臺北校區地圖

Map of NTU Campus in Taipei City

2014 Y 10 M 31 D

臺大
地圖
NTU MAP



往世貿中心/ 捷運 六張犁站
To World Trade Center / Liuzhangli Metro Station

往捷運 麟光站
To Linguang Metro Station

往 1 3
To Freeway

步行 約4~6分鐘
4 to 6 min, on foot

0 100 200 300 M



本圖下載
Download this map

互動式電子地圖查詢
Interactive map of the NTU Campus
http://map.ntu.edu.tw



4

- 圖例說明 Map Legend
- 廁所 Toilet
- 餐廳 Restaurant
- 醫療站 First-Aid Station
- 網球場 Tennis Court
- 排球場 Volleyball Court
- 棒壘球場 Baseball Field
- 博物館 Museum
- 書店 Bookstore
- 捷運站 Metro Station
- 汽車停車場 Vehicle Parking
- 自行車拖吊保管場 Bike Pound
- 出入口 (車輛可通行) Vehicle Exit
- 提款機 ATM
- 銀行 Bank
- 派出所 Police Station
- 游泳池 Swimming Pool
- 籃球場 Basketball Court
- 人工草皮球場 Artificial Turf Court
- 訪客中心 Information
- 捷運出口 Metro Station Exit
- 公車站 Bus Stop
- 機車停車場 Motorcycle Parking
- 自行車修理站 Bike Shop
- 出入口 (僅供行人/自行車通行) Pedestrian / Bike Exit

SPORT FIELDS

NTU's sports fields and facilities are situated mostly on the NTU Main Campus and the College of Medicine campus and are used primarily for physical education classes and the training of NTU sports teams. Since opening in June 2001, NTU Sports Center located at the Main Campus has provided services primarily to university education classes, the training of NTU sports teams and activities for students and faculty. This comprehensive athletic facility has strengthened the sports teams during training, resulting in great performance at College Cup competition over the years.

Main Campus

- 1 NTU Sport Center
- 2 Running Track & Baseball / Softball Field
- 3 Gymnasium
- 4 Outdoor Pool



1



2



3



4

MULTI-DISCIPLINE EDUCATION

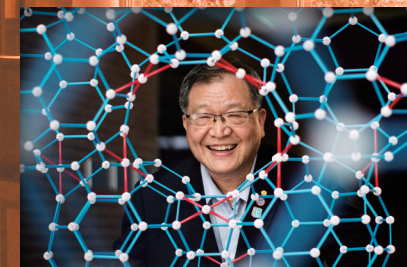
THE RESEARCH UNIVERSITY WITH THE MOST COMPREHENSIVE OFFERING OF ACADEMIC FIELDS IN TAIWAN

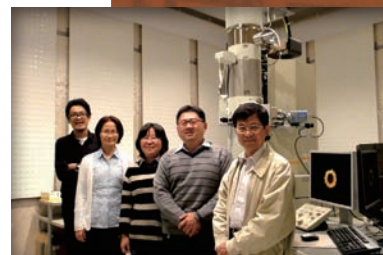
NTU currently accommodates 11 colleges, 54 departments, 105 graduate institutes, and 7 master's and PhD programs, spanning the four general academic fields of Humanities and Social Sciences; Physical Sciences and Mathematics; Biological Sciences, Medicine and Agriculture; and Engineering and Applied Science, and maintains an enrollment exceeding 32,000 students. Whether in terms of size, the comprehensiveness of its academic fields, or the exceptional accomplishments of its faculty and student body, NTU stands as the superlative university in Taiwan. NTU is the institution of higher learning in Taiwan that is the most influential in as well as the most representative of the nation.

An NTU Bachelor's degree is earned based on the number of academic years and academic credits completed. Students in a four-year program require a minimum of 128 credits to graduate. Credit requirements for five-year (or above) programs can be increased at the discretion of individual departments. Students who fulfill the credit requirements shall be granted a Bachelor's degree.

Graduate students in a Master's or PhD degree program must fulfill the credit requirements and qualifying examination to become a degree candidate.

The candidate is required to present a dissertation to and pass the evaluation of a degree evaluation committee in order to be granted a Master's or PhD degree in accordance to the program.





HIGH-QUALITY ACADEMIC ENVIRONMENT BENEFITS THE IMPROVEMENT OF LEARNING QUALITY

Aiming to ensure the university's faculty and students enjoy a high-quality environment for teaching and learning, the Office of Academic Affairs has in recent years carried out full renovations and digitization of campus classrooms across university's departments and graduate institutes in order to create learning venues suitable for "large lecture classes, small discussion groups." In addition to upgrading equipment and facilities, NTU established the Center for Teaching and Learning Development as a subordinate unit of the Office of Academic Affairs in May 2006. The center's major missions include:

1. Advancing Faculty Professional Development

The center organizes new faculty orientation and teaching enhancement program. It also promotes faculty development groups so as to increase opportunities for interaction and sharing among faculty members.

2. Enhancing Student Learning Outcomes

In order to enhance student learning outcomes, the center has formulated diverse learning assistance strategies by focusing on three aspects: guiding active learning, promoting collaborative learning, and improving learning abilities.

3. Establishing a Comprehensive Teaching Assistant System

The center holds teaching assistant orientation, provides individualized teaching consultation services, and promotes advanced training programs in order to encourage teaching assistants to engage in active learning.

4. Raising Performance of Teaching Technology


The main goal here is the production of digital learning resources and the research and promotion of a diverse range of teaching technology applications. The center also makes use of various channels, such as its YouTube EDU channel and ULearning space, for the purpose of exposing a broader audience to the university's teaching and learning resources.

5. Producing and Promoting Digital Courses

The center produces NTU OpenCourseWare (OCW) and Massive Open Online Courses (MOOCs) in order to provide online learning opportunities to faculty, students and the public, as well as to promote concepts and technology related to the handling of intellectual property rights for online audio-visual materials, and to export NTU's high-quality courses.

6. Promoting the Teaching and Learning Quality

The center encourages faculty to apply for the Instructional Development Project to undertake research on teaching and learning. It also promotes Capstone courses in departments. The center conducts surveys and project that influence future policies on the enhancement of teaching and learning.



COMPREHENSIVE CURRICULUM PLANNING, PROVIDING COMPLETE AND DIVERSE LEARNING OPPORTUNITIES

The courses offered at NTU can be divided into liberal education and professional courses. Curriculum planning emphasizes ten core capabilities to be fostered in students: independent judgment and ability to innovate; professional knowledge and skills; a moral compass and a desire to rectify; health management skills; good citizenship; human compassion; communicative and team skills; global vision; respect for different cultures; and aesthetic sensitivity. These capabilities are stressed so as to meet the educational objective of cultivating intellects and leaders with strong character, solid knowledge, compassion for humanity and a global vision to enhance the overall well-being of the nation and humankind.

Working towards this educational objective, NTU has planned and designed a myriad of top and diverse courses. The university offers approximately 7,800 courses every semester. Furthermore, the university has opened 43 cross-departmental and cross-college credited interdisciplinary programs in order to provide students with alternative and innovative learning opportunities. NTU also encourages instructors to develop joint courses that are led by instructors from two or more disciplines in order to cultivate more interdisciplinary experts. With its offering of comprehensive, diverse and well-designed courses, NTU expects to achieve its educational objective of creating accomplished global professionals.

CAMPUS LIFE

Plants are formed by cultivation;
people are formed by education

— Jean-Jacques Rousseau

Time spent in college is one of the most significant periods in life. This period is not just about aiming for high academic achievements, but also about gaining experience and excitement through extracurricular activities. This is especially the case at the National Taiwan University (NTU) where students enjoy a beautiful campus as well as superb resources. NTU provides rich platforms for students to realize their dreams and ensures that students leave with countless unforgettable memories in their life journeys.

The Office of Student Affairs' vision is to "Create cherished memories, support the next generation's leaders, and provide every student of TAIDA with an exceptional learning experience."



STUDENT COUNSELING

For freshmen orientation, the Office developed the "Freshmen Orientation Camp", a 5-day program that allows new students to get acquainted with their senior counterparts, familiarize with all aspects of the campus, and prepare for the beginning of school through activities and interactions.

Outside of classroom learning, dormitory is another place on campus where students spend most of their time building friendships and learning through interacting with others. NTU has a total of 21 regular student dormitories and 5 BOT-style dormitories. The Student Housing Service Division is dedicated to developing programs to ensure students are in line with the "live and learn" motto, gaining experience, and enjoying their college life outside of classrooms. Furthermore, each dormitory establishes special-interest groups according to the needs of the students. This provides them with different challenges and learning opportunities.

The Student Safety Division is responsible for maintaining campus safety and providing assistance to students. In addition, the division also provides consultation services to male students regarding their compulsory military service upon graduation. Such services include assisting with applications for deferring conscription, questions regarding overseas travels, and the Reserve Officers' Training Corps (ROTC) exams.

The Overseas Students Advising Division provides overseas Chinese students' and students from Mainland China with the learning and living adjustments they need while serving as their provisional "home" for the duration of their studies.

The Career Centre here at NTU is determined to motivate all students to develop and take action to achieve their career goals. A series of courses is planned to help graduating students to get ready for employment and to enhance their competitiveness in the global talent market. The Center works to strengthen students' employability by helping them understand themselves, improving their knowledge and skills, and preparing them for future careers and employment.

SUPPORT STRATEGIES

To ensure all students of NTU have an enjoyable and carefree college life, the university provides a variety of financial supports. These include waiving of tuition and miscellaneous fees, grants, student loans, graduate student subsidies, living stipends, and emergency relief funds to eligible students. Also, a variety of scholarships and funds are available throughout the school year. Moreover, all students are covered by group insurance. On top of accidents and physical injury claims, psychiatric counseling and medical services fees have been added to the insurance list in 2014 as an initiative to encourage students and parents who require psychiatric help to be properly treated without financial concerns.

At the Health and Counseling Center, professional therapists, social workers, and medical staff are there to provide students with frontline medical services as well as psychiatric support. Furthermore, security personnel are on standby across school premises 24/7 to maintain safety for all students and staff by delivering effective and efficient security protection.

NTU also shows tremendous support for disadvantaged students by initiating the “Lonely Star Project” and providing these students with reduced-rent, priority dorm assignment and much more. Each college within the university also has designated professional therapists and military training instructors to provide students in need and to refer them to the right department for help when necessary. In addition, the Disability Support Services within the Student Counseling Center provides a series of support programs to help students with one-on-one living, career, academic, as well as counseling assistance.

The Office of Student Affairs aims to provide care and assistance in all aspects of life to our students, and to ensure all of their needs are fulfilled.

A beautiful journey begins as you step onto the National Taiwan University campus.



EXTRACURRICULAR ACTIVITIES AND STUDENT CLUBS

The National Taiwan University hosts over 400 student associations and clubs. The activities organized by these student organizations paint a colorful canvas, and are sources of tremendous vitality.

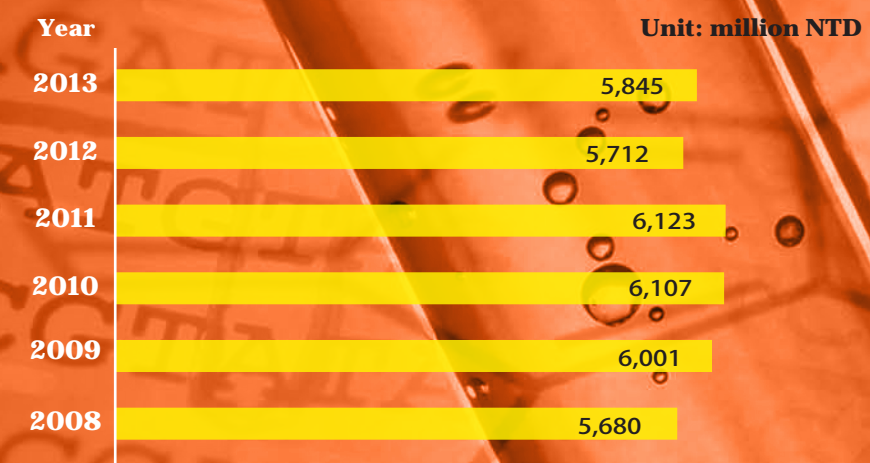
The hub of all student clubs – the Student Activity Center has expanded from the first student activity center near the main library to a second location near the management building. The centers have done an incredible job at spreading NTU spirit. The First Student Activity Center provides space for students to study, to meet for discussions, or to simply take a break. In addition, the center has a variety of affordable restaurants for students to choose from.



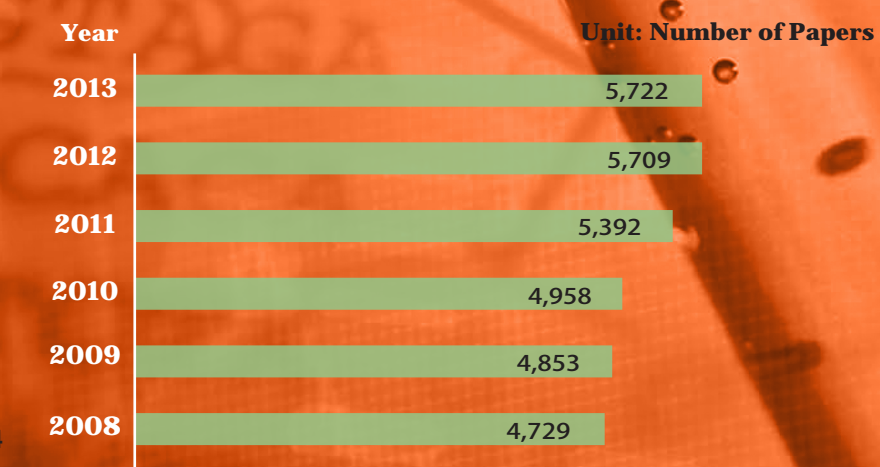
RESEARCH ACCOMPLISHMENTS

Encouraging foresighted, innovative research, playing active role in international collaboration, building a high-quality research environment, and boosting international academic competitiveness.

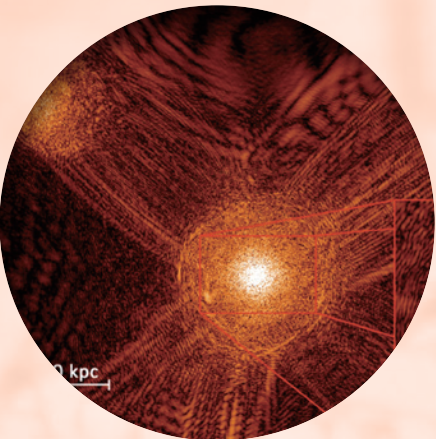
► Value of NTU Industry-Academia Cooperation Plans 2008-2013



► Numbers of papers published by NTU professors in SCI, SSCI and A & HCI listed journals from 2008 to 2013



CUTTING-EDGE RESEARCH BREAKTHROUGH

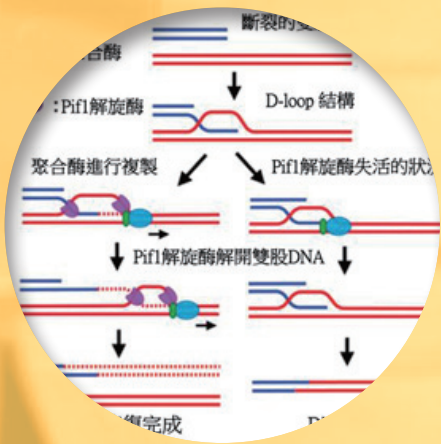


DARK MATTER

／New explanation of black holes

Astrophysics team's research was selected as the magazine-cover of *Nature Physics*

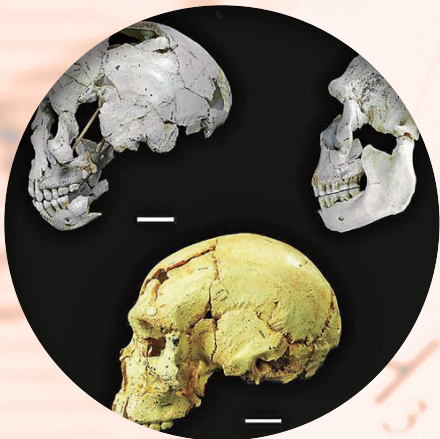
A paper introducing breakthrough research on dark matter that was jointly conducted by Dr. Hsi-Yu Schive of the Department of Physics, Prof. Tzihong Chiueh of the Graduate Institute of Astrophysics, and Dr. Tom Broadhurst of the University of the Basque Country in Spain enjoyed the honor of being featured as the cover article of the July 1 issue of the prestigious journal *Nature Physics*. The cutting-edge paper, titled "Cosmic Structure as the Quantum Interference of a Coherent Dark Wave," is the first to shatter the traditional view of dark matter as being constituted of heavy particles. The team believes the opposite, arguing that dark matter is in fact an extremely light, yet extremely dense, particle. They use this to propose a new explanation for the formation of supermassive black holes within galaxy cores.



DNA REPAIR MECHANISM FEATURED IN *NATURE*

／NTU and Academia Sinica research team shows potential as basis for clinical applications for cancer

Cancer has long loomed at the top of the top-ten causes of death in Taiwan and is a major focus of academic research. Working from the perspective of biochemistry, a research team led by Prof. Hung-Yuan Peter Chi of the Institute of Biochemical Sciences discovered a repair mechanism for damaged DNA that genetics has been unable to explicate. This important finding is expected to benefit the development of new pharmaceuticals and treatments for cancer.



PRECISE RADIOMETRIC DATING HELPS EXPLAIN THE MYSTERY OF THE ORIGINS OF MODERN HUMANS

Prof. Chuan-Chou Shen of the Department of Geosciences was part of a team of 31 anthropologists and geologists from five countries, including Spain, Australia, the United States, France, and Taiwan, that presented its latest human evolution research findings in the June 20 issue of *Science*. Relying on precise radiometric dating techniques, the team estimates that the Neanderthals who lived at the Sima de los Huesos cave in Spain existed at least 430,000 years ago. The team proposes that the Neanderthals possibly evolved from ancient humans that left Africa around two million years ago. This major finding overturns the explanation of the origins and migration of ancient humans in textbooks.



TOPOISOMERASE PROMOTES THE TRANSCRIPTION OF LONG GENES LINKED TO AUTISM, MAY BE POTENTIAL MECHANISM FOR THE FORMATION OF AUTISM

A research team led by the University of North Carolina at Chapel Hill recently reported in the internationally influential journal *Nature* that topoisomerase promotes the transcription of long genes associated with autism. This discovery proves that damaging topoisomerase chemically or through genetic mutation can lead to autism and other neurodevelopmental disorders. Prof. Hsien-Sung Huang of the Graduate Institute of Brain and Mind Sciences has contributed numerous outstanding research achievements as a longtime member of this research plan.

INTERNATIONAL EXCHANGES

The Office of International Affairs (OIA) is responsible for delivering the University's global strategies for higher education. The OIA plays a vital role in NTU's pursuit of excellence through an integration of international partnerships and the creation of global opportunities, in the interests of students, faculty and staff from NTU and from our world partners, and in support of global engagement.

RESPONSIBILITIES

Strong Partnerships

A network of nearly 500 partners in 60 countries have established formal academic partnerships with NTU, forming a strong network of lasting partnership around the world.

Mobile Students and Faculty

The OIA's actions for mobility include operating and tracking an extensive range of exchange, research and study abroad opportunities. The OIA is responsible for more than 400 student exchange programs and 30 faculty exchange programs, as well as more than 65 international dual degree programs. The OIA plays an essential part in the management of international scholars.

A Valued Image

The OIA holds and takes part in key international events, conferences and fairs in various countries: APRU, AEARU and ASAIHL, to name a few. The OIA coordinates regular university-level visits to partners, and also receives 1,000 international visits a year from rectors and other higher education professionals.

A Stimulating International Environment

The OIA cooperates with offices and departments across the University, enhancing support services and offering more international-oriented benefits to ensure a quality experience.



INTERNATIONAL EDUCATION (CIE)

The CIE runs NTU's Summer+ and Spring+ programs, designs tailored programs for overseas partners, develops a comprehensive selection of Chinese language and culture programs open to all international students, and works with colleges and departments to enhance NTU's English-language curricula.

THE INTERNATIONAL PROGRAMS DIVISION

Responsibilities include welcoming foreign stakeholders and guests, ratifying international agreements, implementing faculty exchange programs and international research projects, organizing international conferences and exhibitions, as well as engaging NTU in global alliances and events.

THE INTERNATIONAL STUDENTS DIVISION

Its key role is to assist and advise outbound local and inbound international students. This service is organized into two branches:

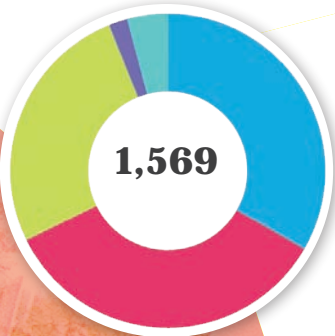
- The Study Abroad Section develops student exchange programs and coordinates summer programs abroad.
- The International Students Section recruits, assists and advises international students, and processes scholarships. The team actively helps international students to become and feel part of NTU's academic communities, and promotes an active, balanced student life where cross-cultural exchanges and open dialogues are encouraged.



PROSPECTS

The OIA has progressed from a previous **Quantity** stage (increase agreements, create more opportunities) to a present **Quality** stage (assert NTU's global influence, diversify collaboration models, raise the quality of student recruits, develop service excellence). For the third developmental phase, the OIA is now on its way towards a long-term '**Sustainability**' stage.

- The OIA is planning for a better NTU brand worldwide: multifunctional cooperation platforms with selected partners, short programs, competitive participation in international organizations, and so on.
- The OIA is diversifying NTU's collaboration models, including: searching for innovative platforms, focusing on clear targets, extending international internships, customizing courses for partners.
- The OIA is raising the quality of NTU's international student recruits: improved marketing, capitalization on specific new markets, and reformed scholarships.
- The OIA is working towards higher service excellence, including: mobilizing human resources talents, streamlining on international affairs administration processes, and building more international competence.



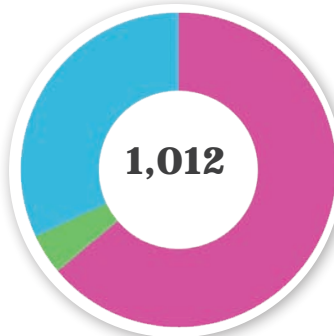
Academic Cooperation

University-wide agreement	522
College/Department-level agreement	541
Student exchange program	411
Faculty exchange program	30
Dual degree program	65



2013-2014 International Students

Degree Students	613
Dual Degree Students	169
Exchange Students	853
Visiting Students	115
Summer Students	300



2013-2014 Study Abroad Programs

Outgoing Exchange Students	647
Outgoing Visiting Students	42
Outgoing Summer Students	323



GLOBAL PARTNERSHIP



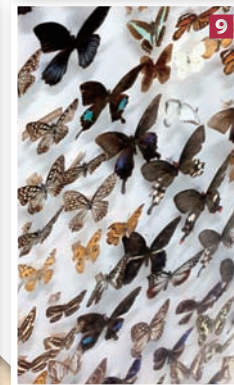
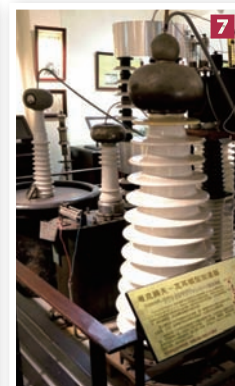
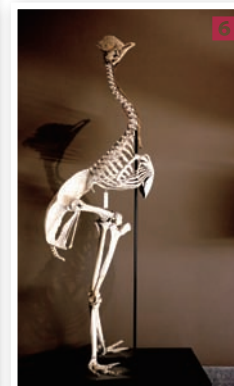
NTU MUSEUMS

More than eight decades have passed since NTU was founded as Taihoku (Taipei) Imperial University in 1928. Over the years, the university has accumulated tens of thousands of academic specimens, historical documents, and cultural artifacts—some of which are even valued as national treasures. Over the previous decades, a number of departments and graduate institutes have established museums and specimen collection of varying scales to focus on different fields. These facilities archived materials for teaching and research or organized them for display but afforded only limited access to the public.

In recent years, NTU has made use of its specimens and archived materials to promote community education and offer lifelong learning opportunities to members of the public. In 2005, NTU Library set about integrating the operations of the different museums. It ultimately succeeded in initiating a new era for university museums at NTU when it unveiled the opening of NTU Museums during the university's anniversary celebration on November 15, 2007.

The group's ten member museums can be found in different corners of the campus. They include the Gallery of NTU History, Museum of Anthropology, Geo-specimen Cottage, Heritage Hall of Physics, Insectarium, Agricultural Exhibition Hall, Herbarium, Museum of Zoology, Museum of Archives, and Museum of Medical Humanities. In addition to housing permanent exhibits, the museums cooperate with the faculty and students of different departments and graduate institutes to organize a wide range of promotional activities in order to develop their roles in community education.

The NTU Museums has not only borne witness to the history of teaching and research at NTU, its archival materials reveal the course of development of higher education in Taiwan as a whole and should be shared and appreciated with the public. NTU's museums are the university's greatest contribution in giving back to society and in caring for the community.



- 1 NTU Agricultural Exhibition Hall
- 2 Gallery of NTU History
- 3 Geo-specimen Cottage-National treasure Cinnamoun Kanehirae Hayata, buried in the Taipei Basin 5000 years ago.
- 4 Museum of Medical Humanities-Statue of Doctor
- 5 Museum of Archives
- 6 Museum of Zoology-Southern Cassowary
- 7 NTU Heritage Hall of Physice-Linear Accelerator
- 8 Herbarium of National Taiwan University-Dry plant specimen(s) of Rhododendron kanehirae E.H.Wilson
- 9 Insectarium-Butterfly specimens
- 10 Museum of Anthropology-Double-sided Ancestral Stone Pillar of The Paiwan

NTU CREATIVITY AND ENTREPRENEURSHIP PROGRAM

STUDENT COUNSELING

- ★ Interdisciplinary learning, conceptual innovation, creative exploration
- ★ Courage to confront failure, breaking down fixed learning habits, critical thinking
- ★ Experiential learning, building professional entrepreneurial knowledge and concepts

PROGRAM GOALS

Developing experienced professionals capable of combining creative thinking with entrepreneurial skills; providing a learning framework for the knowledge and skills necessary for entrepreneurial activities; establishing entrepreneurial situations and models; drawing connections between theoretical knowledge and real-world situations; and building a foundation from which students can pursue their future entrepreneurial development.

PROGRAM CHARACTERISTICS

- **Grounded in entrepreneurial knowledge and theory:** Using systematic thinking processes and robust learning models that expand the ways students view and think about various problem-solving situations
- **Diverse experiential learning:** Providing a broad range of knowledge and situations to stimulate creativity and imagination; the program covers marketing, social enterprise, management, user experience, service design, art design, and more
- **Teamwork and practical experience:** Using team-based approaches to engage in in-depth learning, practical experiences, synergetic advantages, and developing the power of group cooperation
- **Preparation for the real world:** Providing a learning framework for entrepreneurial knowledge and skills; establishing entrepreneurial situations and models; enabling students to handle various situations in society; creating a foundation from which students can embrace the future and utilize opportunities

ANNUAL ACTIVITIES OF THE CREATIVITY AND ENTREPRENEURSHIP PROGRAM

- **New CEP Students Camp:** The training camp is a condensed version of the program that familiarizes new students with creativity and entrepreneurship and allows them to make the necessary preparations for participating in the year-long program ahead.
- **Creativity and Entrepreneurship Forums:** Each semester, the forums invite people who have succeeded in the areas of creativity and entrepreneurship to share their experiences in order to spark students' entrepreneurial ambitions and expand their worldviews.
- **Semester-end Party and Project Exhibition:** This event gives students in the program a chance to show off their accomplishments, stimulating even more creative ideas and attracting other students with a passion for entrepreneurship to join the program.
- **Newly-established Company Internship and Networking Fair:** This event brings students together with the representatives of newly-established companies and lets them recommend themselves in person for internship and employment positions.
- **Future Entrepreneurs Training Camp:** This is a course that relies on experiential learning to guide students in learning about themselves as individuals and developing teamwork skills.
- **Participation in Entrepreneurship Competitions:** The program offers guidance in order to encourage students to participate in creativity and entrepreneurship competitions, including the NTU Innovation Contest and Acer Long-term Smile Competition.

2015 PROGRAM STUDENT RECRUITMENT

- **Enrollment:** 60 students each year

- **Eligibility:**

- (1) Open to all current NTU students

- (2) Students who demonstrate a passion for creativity and entrepreneurship

- (3) Students who are proactive and enthusiastic, possess the courage to embrace originality, and seek to develop teamwork skills

- **Application period and materials:** Announced each April on the CEP website and Facebook fans page

- **Application process:** Download and fill out an application form from the CEP website and send the completed form with the required application materials by registered mail or deliver in person to the CEP office (106, Taipei City, Daan District, Keelung Road, Section 3, Lane 30, Alley 2, No. 2).

- **Approval method:** Based on application material and interview

- ★ Students accepted to the program are required to participate in the 3-day/2-night New CEP Students Camp before the start of the semester.

Executive Committee: NTU Secretariat
A short guide: (National Taiwan University)

Publish Place: National Taiwan University

Publisher: Pan-Chyr Yang

Editor: Ta-Te Lin

Tel: 886-2-3366-3366

Address: No.1, Sec.4, Roosevelt Road, Taipei, 10617

Taiwan 2305-4069

Website: <http://www.ntu.edu.tw>

ISSN: 2305-4069

GPN: 2009504734